



Smart Plus

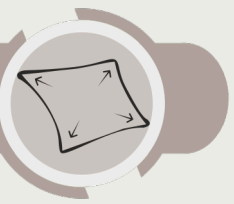


FIRE RETARDANT

FR means fire retardant, it prevents burning and spreading of fire. FR standard-FMVSS 302

4-WAY STRETCH

4-way stretch means that the fabric stretches in both directions cross-wise and width-wise.

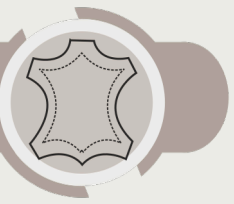


SOFT TOUCH

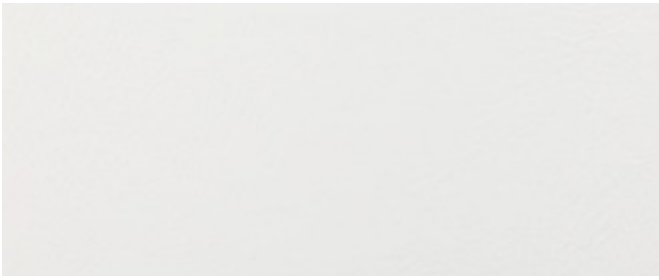
Soft touch means the fabric has a soft and smooth hand feel.

VEGAN LEATHER

Vegan leather means its environmental friendly and is an animal cruelty free fabric.



MERRY



MERRY|701



MERRY|702



MERRY|703



MERRY|704



MERRY|705



MERRY|706



MERRY|708



MERRY|707



MERRY|709



MERRY|711



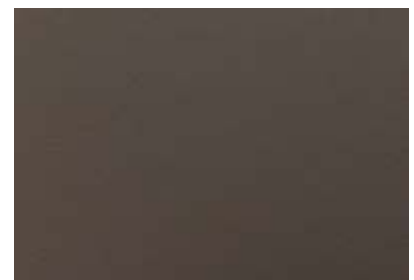
MERRY|712



MERRY|710



MERRY|736



MERRY|737



MERRY|717



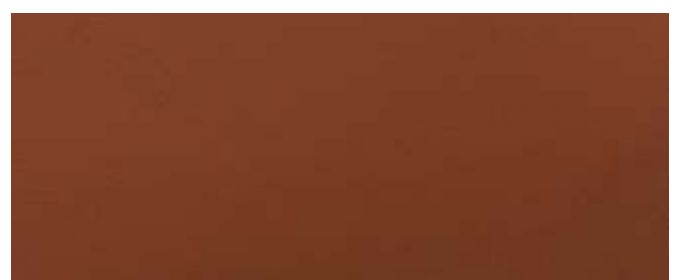
MERRY|713



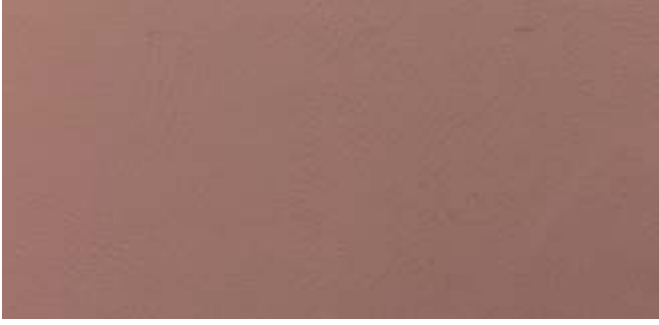
MERRY|716



MERRY|714



MERRY|715



MERRY|720



MERRY|721



MERRY|719



MERRY|718



MERRY|738



MERRY|734



MERRY|739



MERRY|735



MERRY|740



MERRY|741



MERRY|742



MERRY|743



MERRY|744



MERRY|745



MERRY|722



MERRY|726



MERRY|723



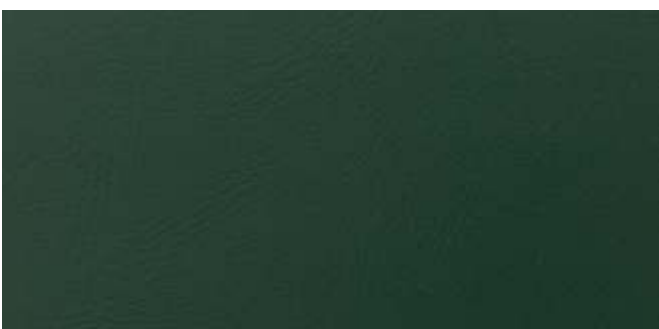
MERRY|727



MERRY|724



MERRY|728



MERRY|725



MERRY|729



MERRY|733



MERRY|730



MERRY|731



MERRY|732



MERRY | 742

MERRY



DESIGN	WIDTH	GSM	COMPOSITION	MARTINDALE	COLOUR FASTNESS TO LIGHT	END USE
MERRY	137cm	560	2% PU, 66% PVC, 32% PL	50000	4	
WASH CARE INSTRUCTION				END USE	FLAMMABILITY-FMVSS 302 - PASS	
CLEAN WITH DRY CLOTH DO NOT USE ANY SOAP				Upholstery	Complimentary Sample Not For Sale Color May Vary From Batch To Batch	
ADDITIONAL FEATURE - SOFT MULTI-DIRECTIONAL EASY STRETCH EXCELLENT FITMENT ON CHAIR PANELLING SOFA HEAD BOARD SUPERIOR FLEXIBILITY FR STANDARD FMVSS302 APPROVED EXCELLENT SEAM STRENGTH CRUELTY FREE						

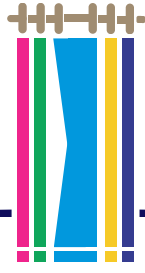
- We do not accept responsibility for any damage resulting from inappropriate use, chemical cleaning or additional impregnation.
- Test results were gathered from various samples and therefore represent average indicative values.
- Discolouration caused by clothing fabrics such as jeans does not represent a material defect. Minor colour deviations and discolouring in context of permissible industrial tolerance standards do not constitute reasons for claims.

PU / PVC FABRIC CARE INSTRUCTIONS • Vacuum and dust regularly. • Do not place heaters close to PU/PVC fabric (No closer than 50cm). • Protect from direct sunlight. • Wipe over contact areas regularly with a clean soft cloth. • Avoid hard rubbing or scrubbing. • Treat all liquid and food spills immediately. • Clean contact areas of perspiration & body oils regularly. • Keep pets and sharp object away from PU/PVC fabric. Fur is particularly only and may cause permanent discoloration. Claws belt buckles, heels keys knives, etc can cut and/or pull causing permanent PU/PVC fabric damage.

Wash care instructions need to be followed for prolonged usage of fabric, otherwise will damage the fabric. Test results were gathered from various samples and therefore represent average indicative values. Discolouration caused by clothing fabrics such as jeans does not represent a material defect. Minor colour deviations & discolouring in context of permissible industrial tolerance standards.



Smart Plus



The Epitome of Excellence

Bhartiyam Furnishing
The Fine Furnishing Store



MERRY